

HÁ ESPAÇO PARA MAIS INCINERAÇÃO?

“The ‘new’ waste framework directive –
is there space for more incineration?”

Carsten Spohn

Managing Director
German Association of Waste-to-
Energy Plants,
ITAD e.V.

Deputy President
Confederation of European Waste-
to-Energy Plants CEWEP, e.V



*Interessengemeinschaft der
Thermischen Abfallbehandlungsanlagen
in Deutschland e.V.*





CEWEP – Confederation of European WtE Plants

Under one umbrella

CEWEP is the umbrella association of the operators of Waste-to-Energy (WtE) Plants across Europe.

They thermally treat household and similar commercial & industrial waste that remains after waste prevention, reuse and recycling and generate energy out of it.



Krakow WtE plant, Poland



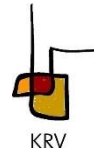
2016 - CEWEP Members: 80 M tonnes; 410 plants

- EU 28: 88 M tonnes; 441 plants

- Europe: 94 M tonnes; 488 plants



CEWEP – Members



- **German Association of Waste-to-Energy Plants**
- represents almost **80 Municipal Solid Waste Incinerators (MSWI) and Refuse Derived Fuel Incinerators (RDFI)** with round about **24 Mio. t annual treatment capacity**
- Members: Private, Public and PPP



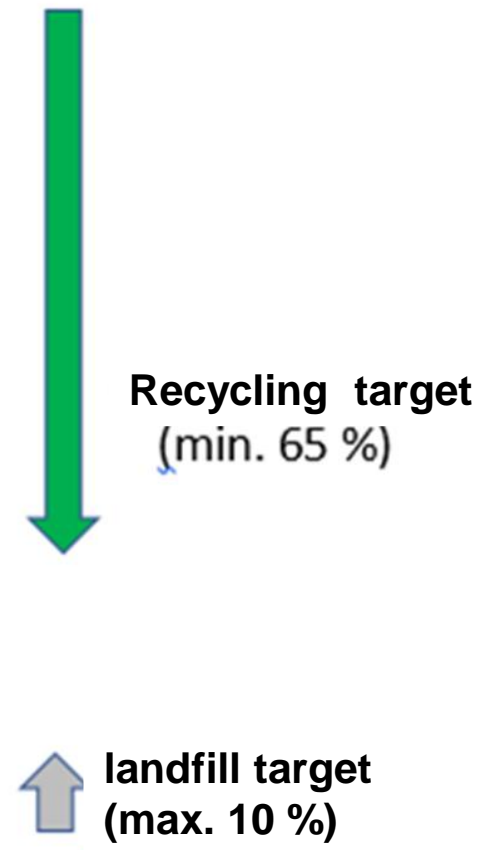
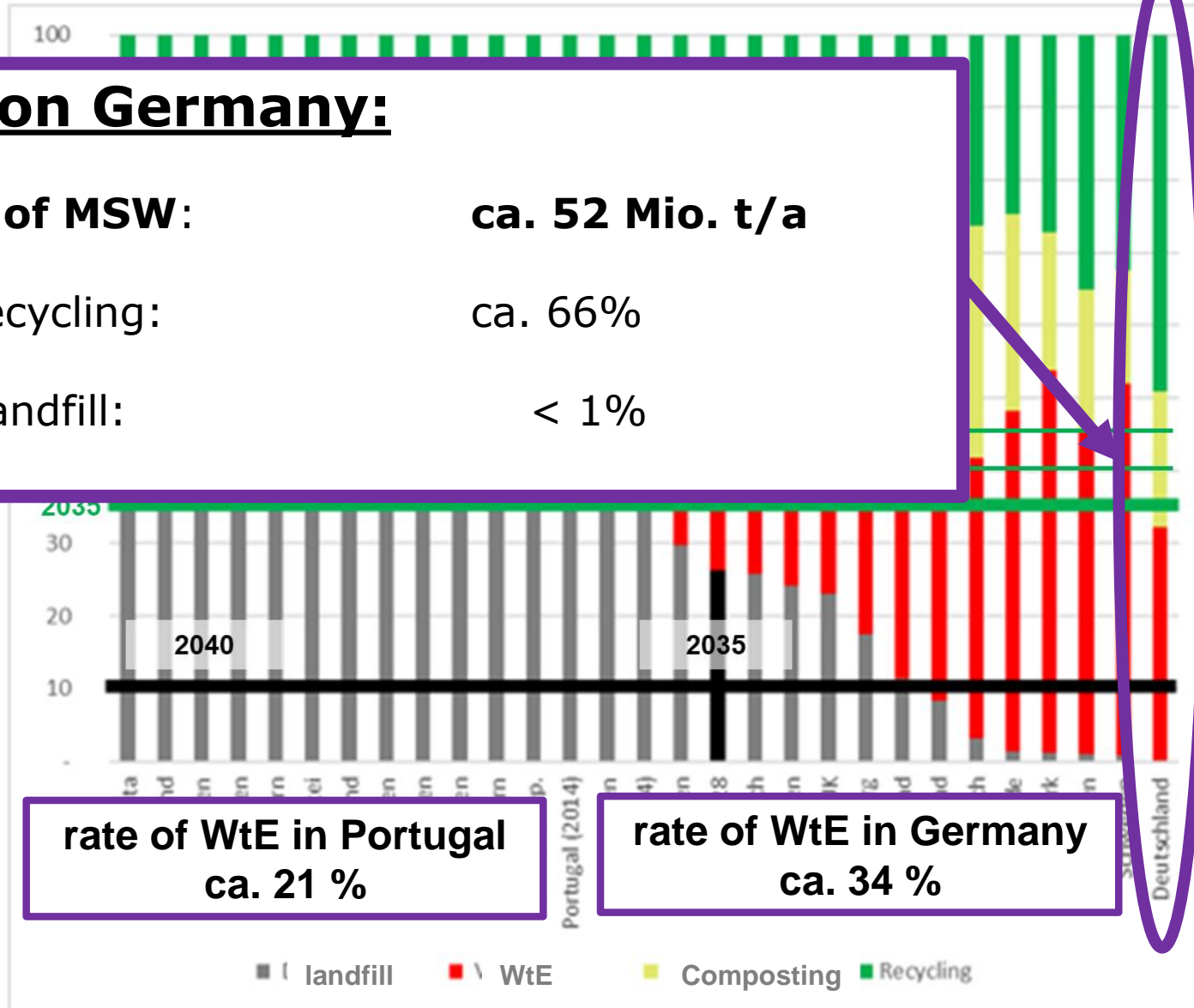
The Circular Economy Package - some challenges...

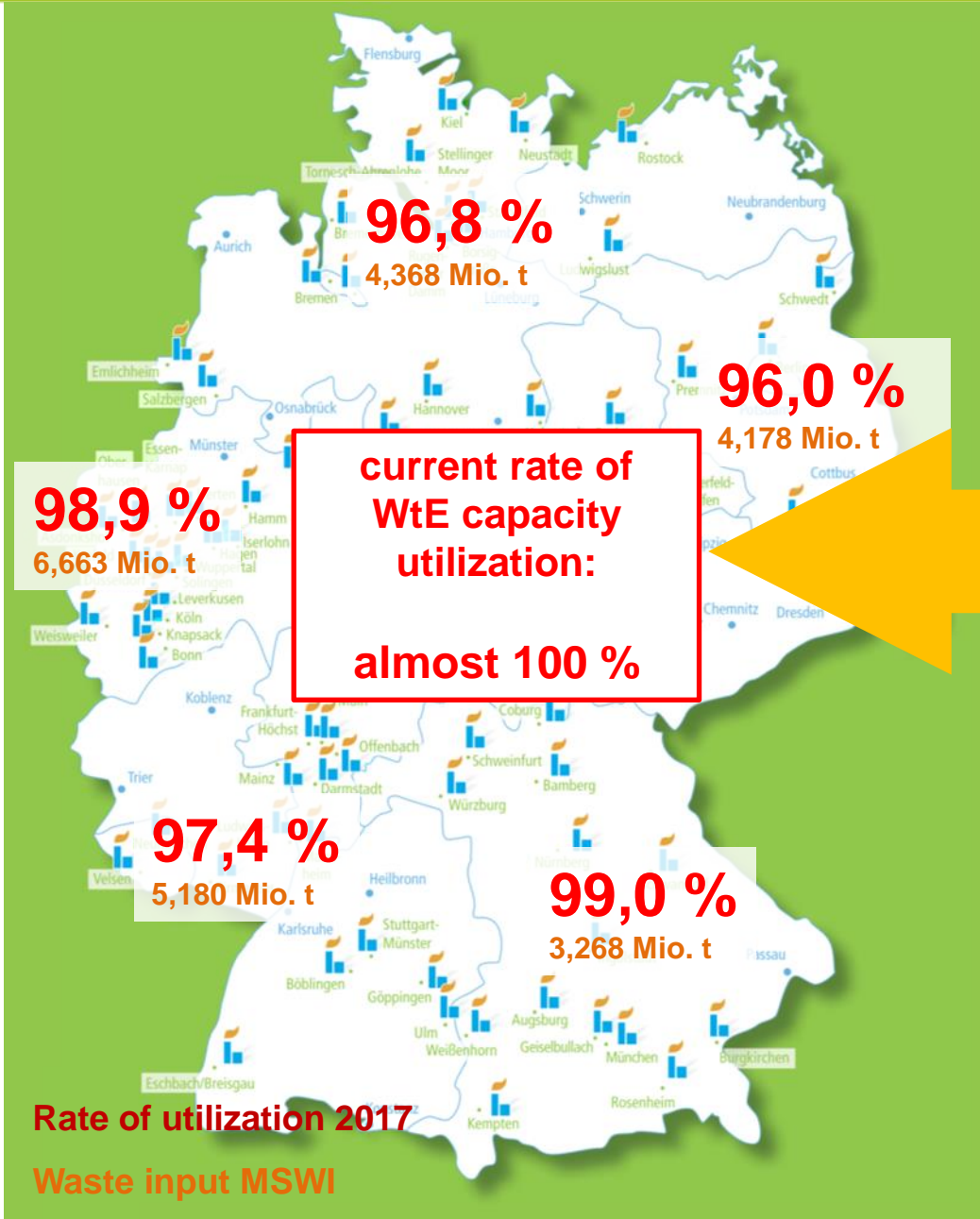
focus on Germany:

amount of MSW: ca. 52 Mio. t/a

rate of recycling: ca. 66%

Rate of landfill: < 1%





Key facts:

amount of MSW: **ca. 52 Mio. t/a**

rate of recycling: ca. 66%

Rate of landfill: < 1%



But obviously no overcapacity ...!!!

Theoretical capacity for WtE: **ca. 17,6 Mio.t/a**

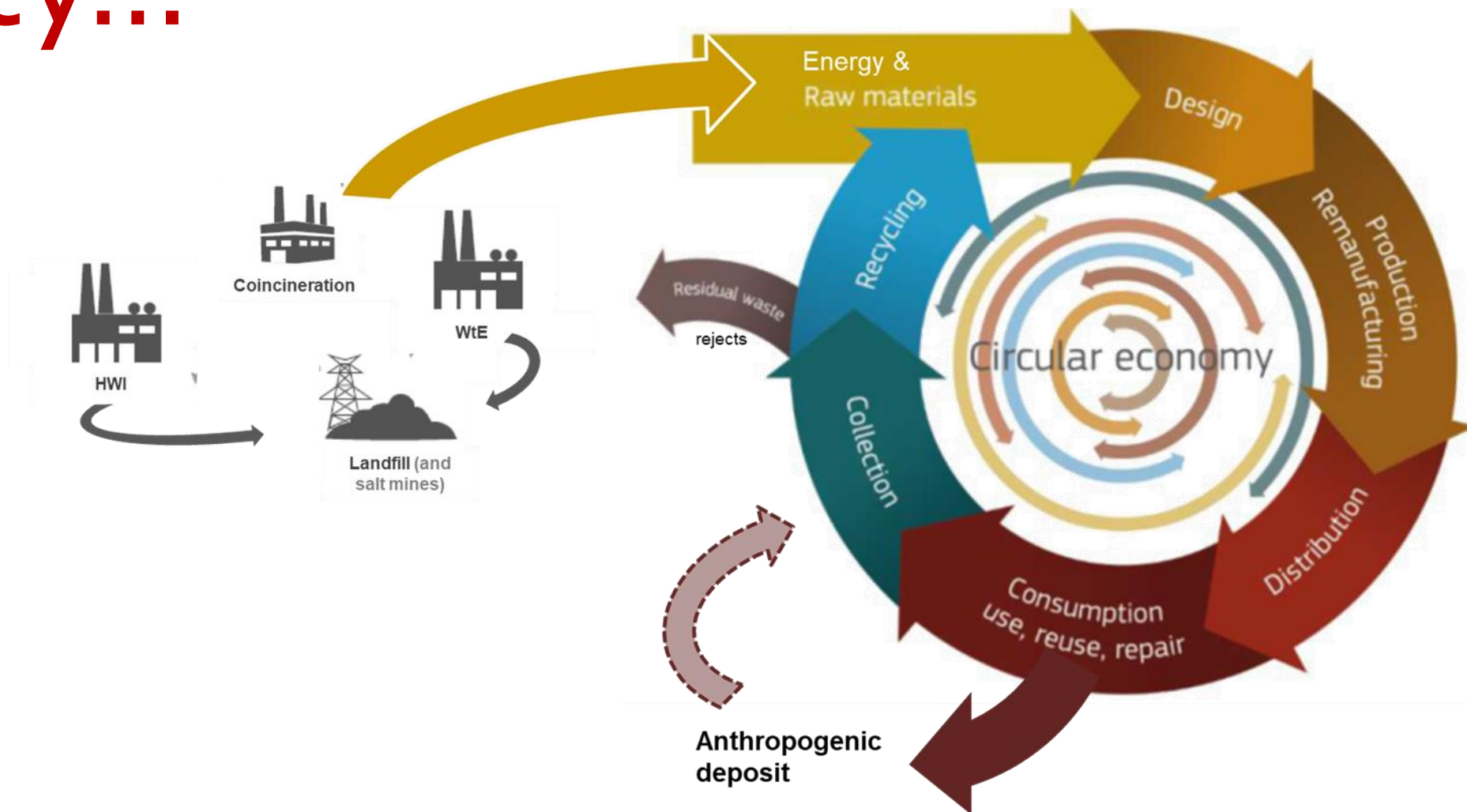
Current capacity : (incl. Coincineration) **ca. 30,0 Mio. t/a**

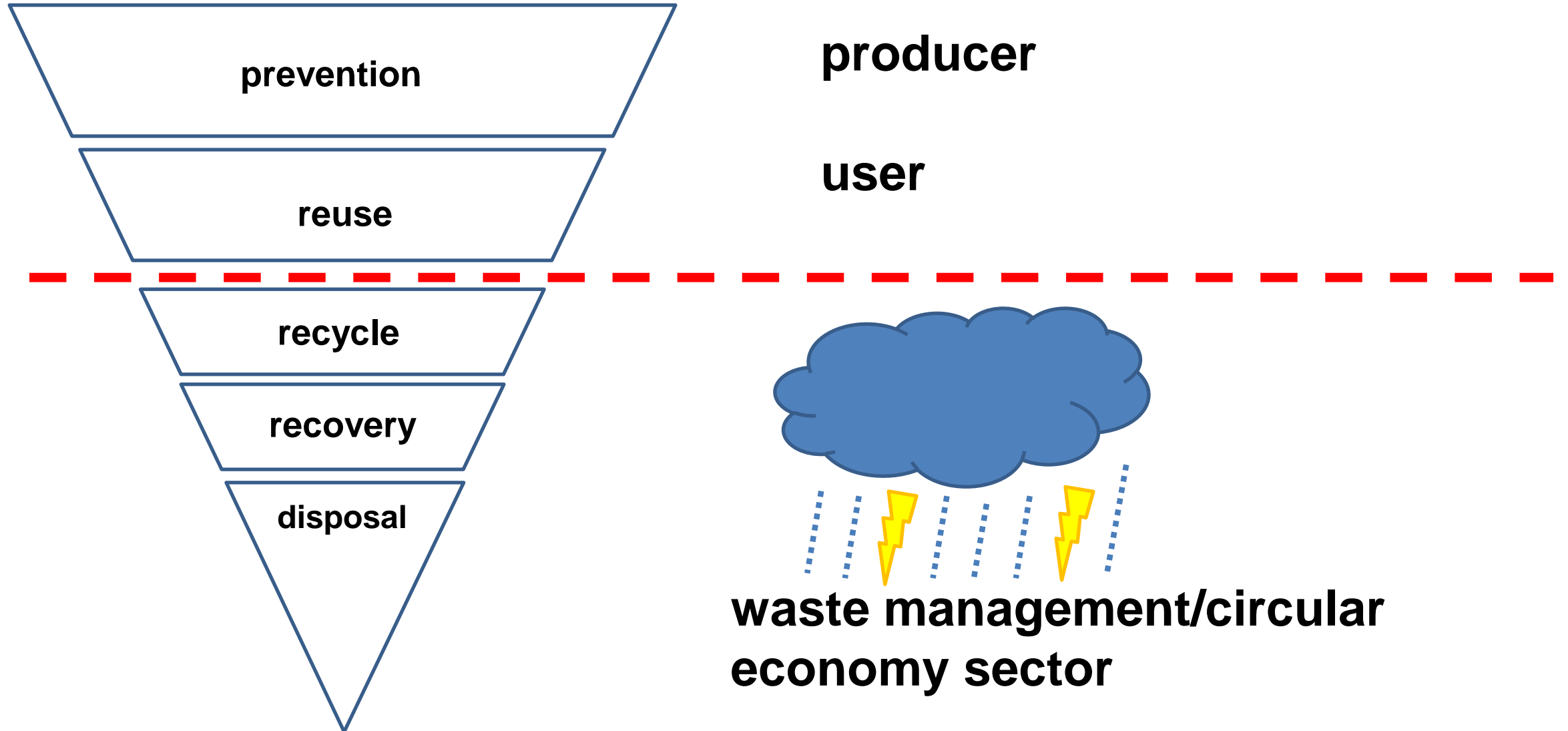
Imports for WtE: << 2 Mio. t/a

The vision...



Reality...





Waste-to-Energy – current status

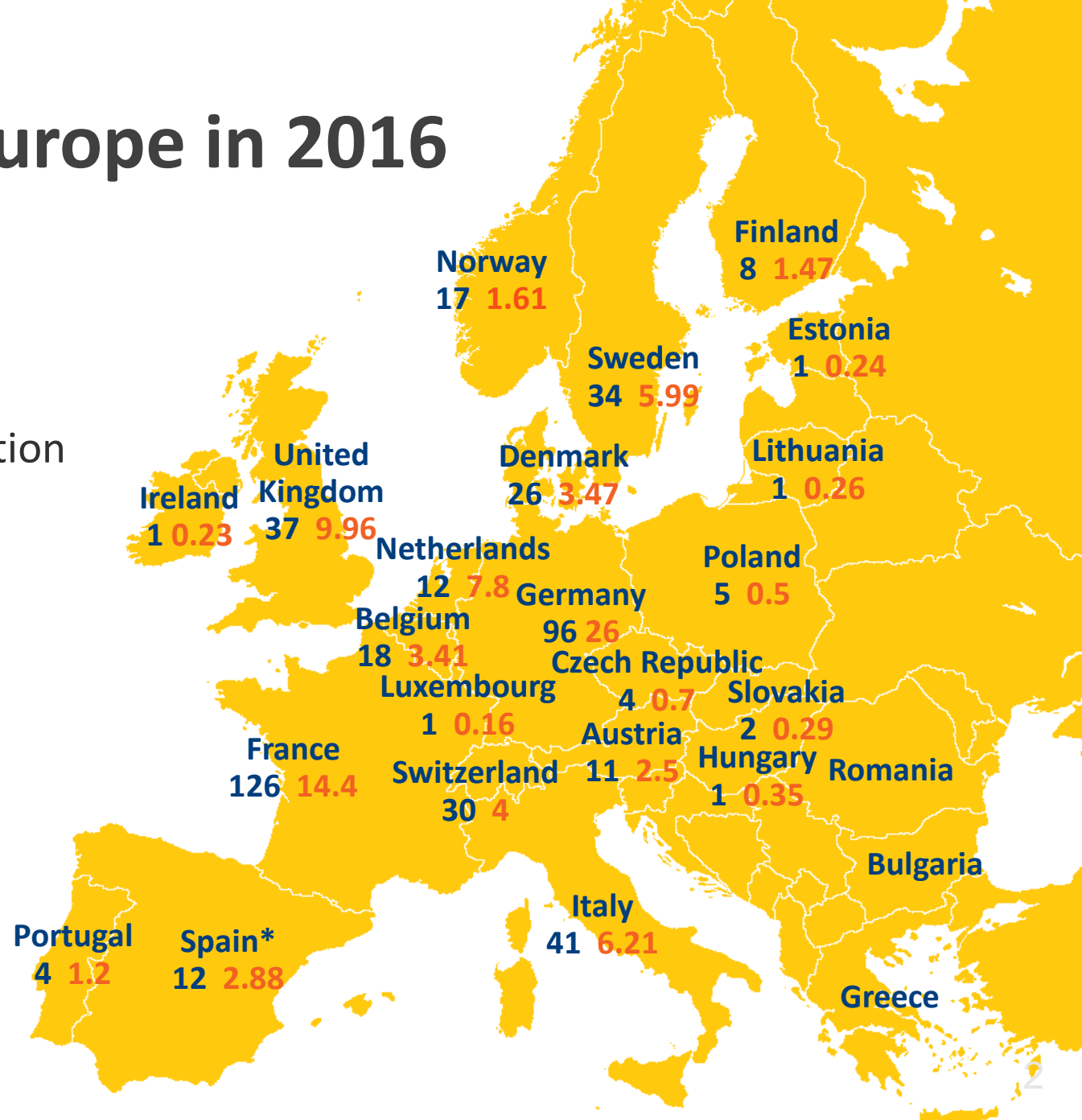


Waste-to-Energy in Europe in 2016

- WtE Plants operating in Europe (not including hazardous waste incineration plants) : **488**
- Waste thermally treated in WtE plants (in million tonnes): **93.9**

Data supplied by CEWEP members and national sources

* Includes plant in Andorra



WtE is a cornerstone of European waste management and an essential part of sustainable resource management –

WtE isn't part of the problem, it's part of the solution to proper waste management in advanced circular economies.

- **WtE** acts as a pollutant sinks, it **guarantees high quality recycling**
- **WtE guarantees** long-term and affordable **disposal security**, and contributes to **climate protection** by reduction of dumping waste in landfills
- **WtE is a sustainable contribution to resource protection** through 'thermal recycling' - energy recovery as well as metal separation from slags and provision of high-quality mineral substitute building materials).
- **WtE helps to keep our environment clean** (soil, rivers and oceans).

**Waste-to-Energy – the burning
question:**

***Is there space
for more
incineration?***

More space for incineration...?

plastic recycling?

I think so...

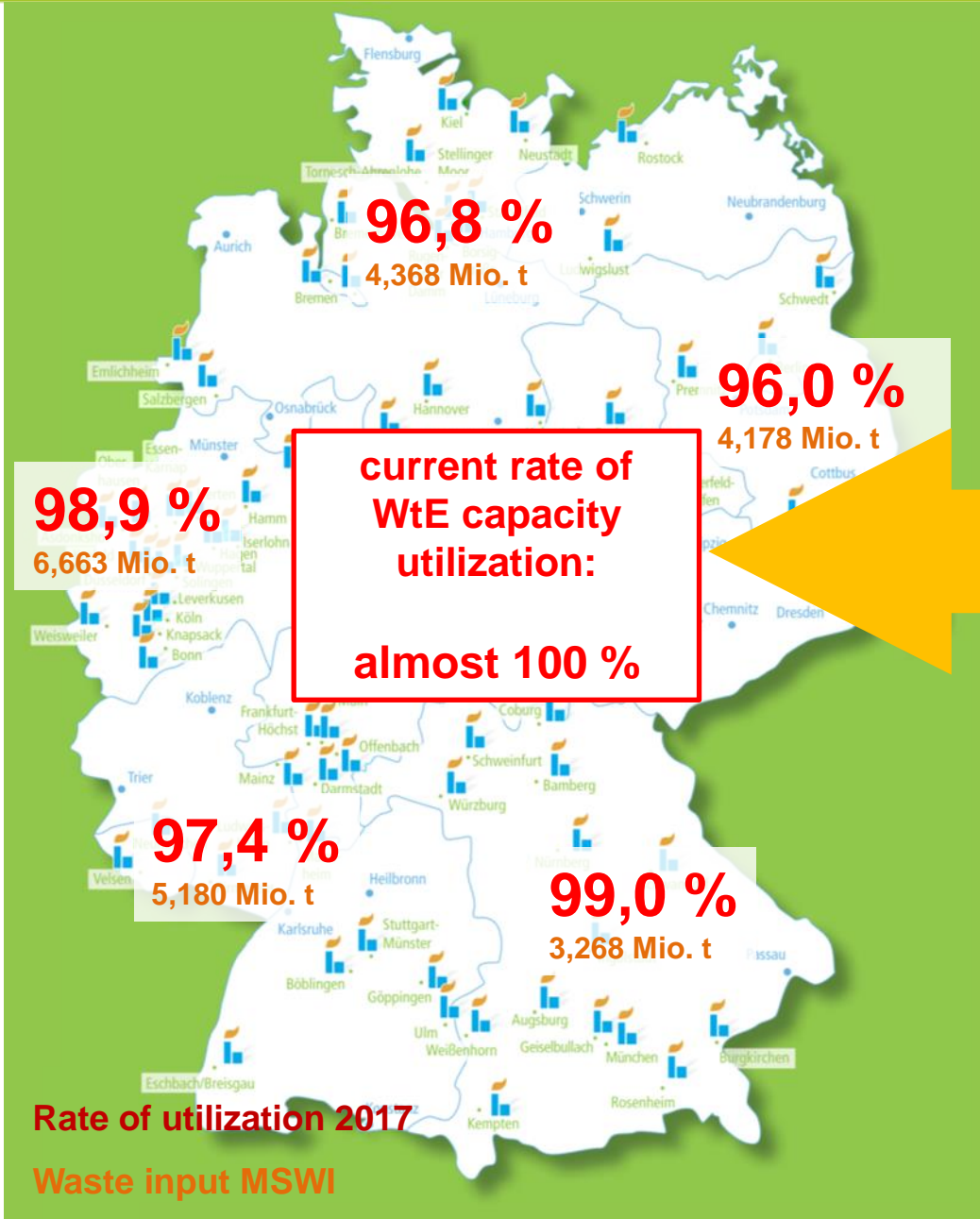
**It's not a question if we need more
WtE capacities, it's more about how
much capacity we will need, but ...
capacity building should be checked
carefully...**

plastic recycling?



Journal - die doku: Tödlicher Müll in China, 25.09.2013

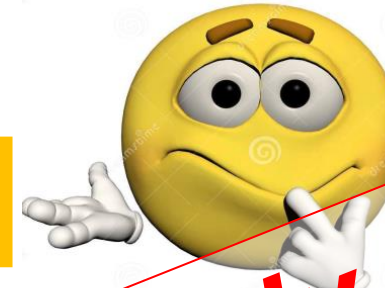
Quelle: ZDF auslandsjournal - die doku: Tödlicher Müll in China, 25.09.2013



Key facts:

amount of MSW: **ca. 52 Mio. t/a**
 rate of recycling: **ca. 66%**
 Rate of landfill: **< 1%**

But obviously no overcapacity ...!!!

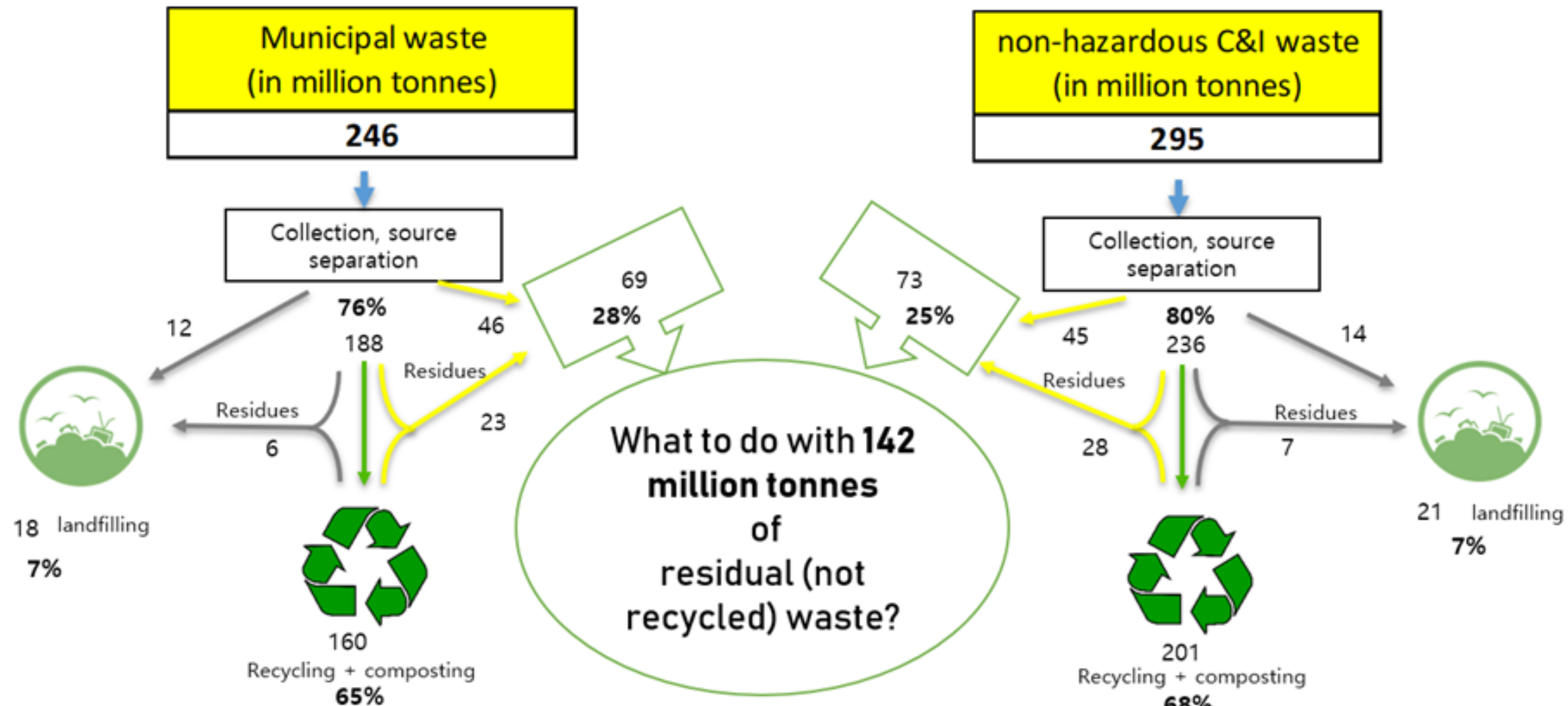


Theoretical capacity for WtE: **ca. 17,6 Mio.t/a**
 Current capacity : (incl. Coincineration) **ca. 30,0 Mio. t/a**
 Imports for WtE: **<< 2 Mio. t/a**

It's not only MSW...



The Circular Economy package scenario with ambitious targets for commercial waste: 2035



Current WtE and co-incineration capacities ca. 100 million tonnes

*2016 data, EU 28



***Thank you for
your patience!***



Any questions?